



## Summary of Public Input

### **Virtual Office Hours: Loma Alta NPA**

January 11 @ 5:00pm

5 Participants

- Eastern portions of Eastside Capistrano seem more akin to the Loma Alta NPA (though these areas are separated from Loma Alta by Mission Avenue).
- The areas of Eastside Capistrano zoned for high-density residential use include a considerable amount of older single-family development, which would seem to present opportunities for additional housing through redevelopment. Such redevelopment should be sited and designed to be sensitive to neighborhood character.
- The pervasiveness of homelessness in the area – particularly in proximity to the San Luis Rey River – presents issues of safety, hygiene, and cleanliness. The City must do more to address illegal encampments in the river, loitering in public spaces (e.g., Capistrano Park), and threatening language and behavior. While residents want to see homeless individuals treated humanely, they also expect public spaces to be safe, secure, and clean.
- The SLR River Trail is a great amenity. Additional connections to the trail should be explored. Thoughtful and humane solutions to homelessness would encourage more people to utilize the trail.
- The City should be mindful of how intensification of the Mission Avenue corridor facilitated by the Smart and Sustainable Corridors Plan could impact quality-of-life in Eastside Capistrano.
- More residents would likely patronize the bus system if the bus stops were more attractive, more commodious, and better maintained. Consider ways to make bus stops more comfortable during cold and inclement weather. Provide more landscape near bus stops to enhance visual quality and make the immediate area more inviting. Consider bus shelter designs found in other communities, both within and outside of the United States.
- Enhance code enforcement efforts in the neighborhood, particularly in response to graffiti.
- From the point-of-view of many residents, Balderrama Park remains unsafe. The City should renovate the park to make it more functional and attractive and thereafter provide better monitoring and enforcement of uncivil and criminal activity.
- Traffic calming is needed on several streets, including Lankford and Loretta.



- Safe and accommodating crosswalks should be installed where Loretta and Canyon intersect Hwy 76, and access to the river trail should be provided at these locations.
- The ecological value of Lawrence Canyon should be restored and maintained.
- 

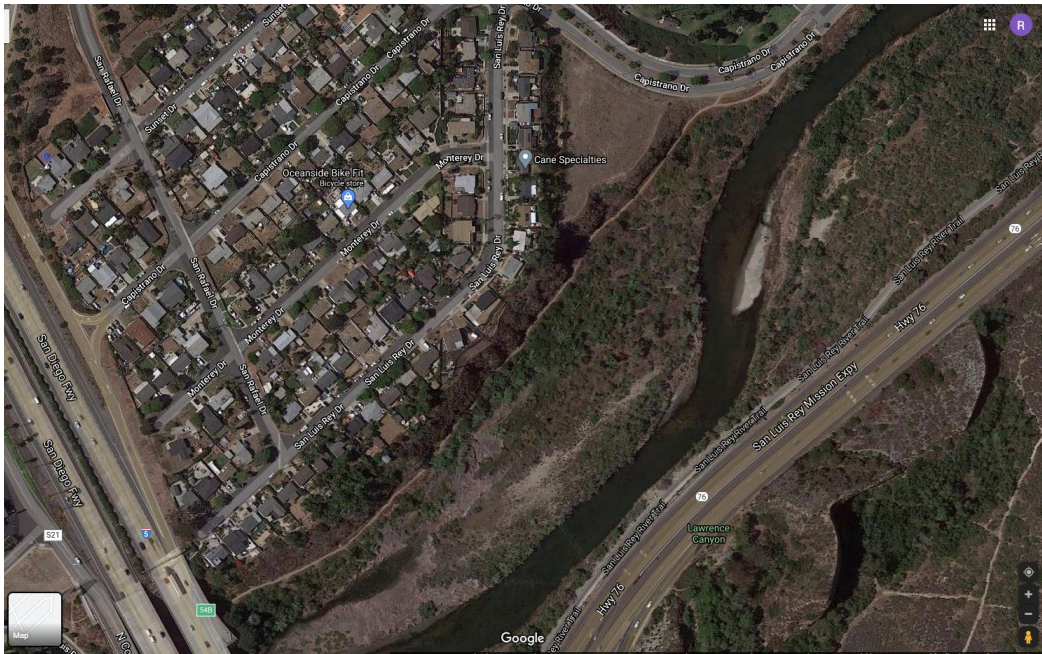


Intersection of Canyon Drive and Highway 78

- There should be clear and enforceable rules for trail use, and these rules should be enforced.
- Gaps in sidewalk in the neighborhood should be filled and sidewalk obstructions should be removed. Some streets only have sidewalk on one side.
- Eastside Capistrano is a gateway into the City from I-5 and Highway 76. Enhancing the visual character of gateway locations would improve Oceanside's brand and
- The City should explore the implementation of a pedestrian trail that connects the northern portion of Eastside Capistrano to the Harbor along the north side of the river. Much of this area is neglected, making it attractive for illegal camping and other activities that degrade sensitive habitat and water quality. Allowing for pedestrian traffic in this area would put eyes on this segment of the river and discourage uncivil and illegal behavior. This trail could largely replace the catwalk over I-5, which is extremely unsafe.



- The natural habitat in the river is a draw for birders and other naturalists. The City should explore ways to improve access to the river for those who value its ecology, while concurrently enhance this ecology.



Informal trail along the north side of the SLR River

- The SLR River should be transformed from liability to asset by addressing litter, fire, water quality, sensitive habitat, and access.